

UTTAM  
INDIA

Sustainable Turnkey Engineering Solutions for  
**Sugar, Alcohol & Power Co-gen**  
Delivered Across the Globe



**UTTAM SUCROTECH**  
INTERNATIONAL

---

UTTAM (उत्तम): A Hindi word meaning  
*"n.v.: Superior, the Best"*

Also, the name of our Founder Chairman –  
Mr. Uttam Chand Adlakha



---

## VISION of the Founder Chairman

---

*"To be a globally respected  
high-performance engineering organization  
offering engineering products and turnkey  
services  
conforming to the tenets of  
"UTTAM Quality "*

---

Uttam Chand Adlakha  
*Founder Chairman*



# UTTAM GROUP

---



A global conglomerate with an annual turnover of **\$ 250 million +** and over **2,000 employees** worldwide

# CORPORATE STRUCTURE

---

## 3 Businesses Verticals



***Sugar-cane  
farm  
management,  
Production of  
White Crystal &  
Refined Sugar,  
Alcohol and  
Green Power***

***Design,  
Manufacturing  
& Project  
Management of  
Turnkey  
Solutions for  
Sugar, Alcohol  
and Power***

***Automobile  
Dealerships in  
association  
with Toyota,  
Japan***

# A SNAPSHOT OF THE UTTAM GROUP

---

- ✓ Established in 1962 in India, with offices in 6 countries
- ✓ More than 100 EPC / turnkey projects executed
- ✓ 22 Complete turnkey sugar plants with co-generation
- ✓ Over 400 Boilers installed and commissioned
- ✓ 72 turnkey Milling Tandems
- ✓ A leading Indian sugar producer. Owns and operates 4 sugar factories in India with a combined capacity of 25,000 TCD producing 300,000 tonnes sugar, 104 MW power, and 150 klpd ethanol.
- ✓ Access to proven technologies from Australia, Austria and Brazil.

# GROUP COMPANIES

---

## PROJECT ENGINEERING EXECUTION & MANAGEMENT

- ✓ IU International Holdings Pte Limited – Singapore
- ✓ UTTAM Sucrotech International Pvt Limited
- ✓ UTTAM Sucrotech International Latin America – Brazil
- ✓ UTTAM Sucrotech International – UAE

## EQUIPMENT MANUFACTURING

- ✓ UTTAM Sucrotech International Pvt. Limited (Works)
- ✓ UTTAM Industrial Engineering Pvt. Limited
- ✓ UTTAM Energy Systems

## SUGAR, ETHANOL & POWER CO-GENERATION

- ✓ UTTAM Sugar Mills Limited

## AUTOMOBILE DEALERSHIPS & SERVICE CENTRES

- ✓ UTTAM Toyota



# UTTAM'S FOUR SUGAR MILLS

- ✓ Total of 4 units producing 300,000 tonnes of sugar/ year, cogenerating over 100 MWh Power and a 150 KLPD Distillery producing fuel ethanol.



# UTTAM'S FOUR SUGAR MILLS

Unit	Libberheri	Barkatpur	Shermau	Khaikheri
Plant Capacity (TCD)	6,250	7,000	5,500	4,500
Manufacturing Process	Defeco Remelt w/Ion Exchange	Double Sulphitation	Defeco Remelt	Defeco Remelt
Sugar	Refined	Plant White	Refined	Refined
Sugar Quality (Best Figures)	15 ICUMSA	80 ICUMSA	35 ICUMSA	35 ICUMSA
European Standards	EEC1	--	EEC2	EEC2
Power Cogen (MW)	23	40	30	15
Distillery (KLPD)	--	150	--	--

All 4 Sugar Plants have been designed, engineered, manufactured, erected and commissioned by UTTAM's in-house team



# CORPORATE STRUCTURE (USIPL)

---



# UTTAM SUCROTECH INTERNATIONAL

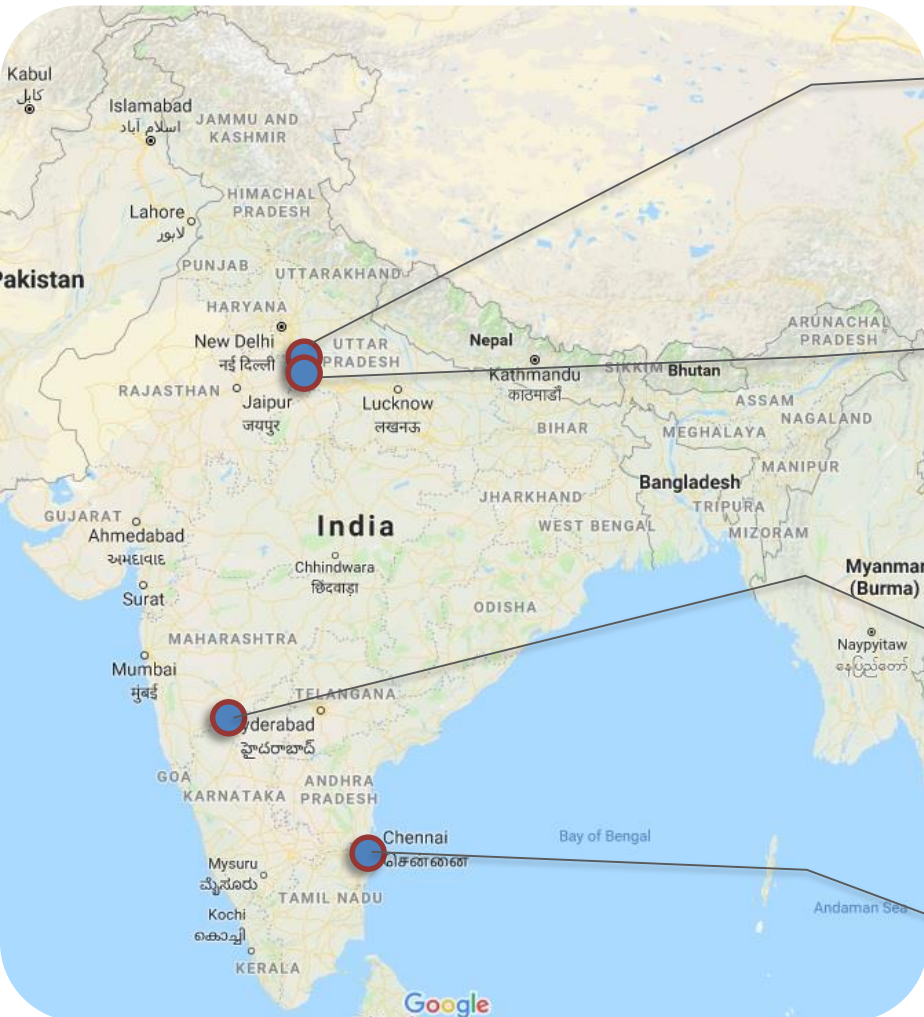
---

A dedicated organization borne from Uttam's experience in providing turnkey/ EPC solutions for **sugar, alcohol and cogeneration** applications in India and globally.

USIPL operates globally, and specializes in the design, manufacture, supply, erection & commissioning of:

- ✓ Complete greenfield, energy-efficient sugar plants, including civil works.
- ✓ Milling tandems.
- ✓ Raw and refined sugar process plant.
- ✓ Boilers, bagasse handling and cogeneration plant.
- ✓ Biofuel and ethanol plant.
- ✓ Expansion and modernisation of existing plant.

# UTTAM SUCROTECH INTERNATIONAL



Corporate Office: **Noida**

Distance from nearest airport **Delhi**: **40 km**

Works: Unit 1, Unit 2 **Ghaziabad**

Distance from nearest airport **Delhi**: **52 km**

Engineering Office – 1 : **Pune**

Distance from nearest airport **Pune** : **5 km**

Distance from **Mumbai** airport : **170 km**

Engineering Office – 2 : **Chennai**

Distance from nearest airport **Chennai**: **20 km**

# UTTAM'S STRATEGIC TECHNOLOGY PARTNERS

---



## **Vogelbusch Biocommodities, Austria:**

- ⇒ Bioprocess engineering & consultancy services.
- ⇒ Process design of alcohol plants since 1921.



## **Sugar Research Institute, Australia:**

- ⇒ Process house engineering, major plant designs, energy/ process audits, commercial research.
- ⇒ Over 100 projects each year (Australia and overseas).

## **Uttam Energy, India:**

- ⇒ Manufactured and supplied boiler ranging from 10 TPH to 200 TPH capacity.
- ⇒ Design capability to manufacture up to 300 TPH capacity.
- ⇒ ASME design and manufacturing with 'S' stamping under Lloyds' inspection.



# UTTAM'S MANUFACTURING FACILITIES

---

- ✓ The **only** Industrial Engineering Group in India, manufacturing 100% machinery & equipment for the Sugar and alcohol industry in our own workshops, in-house
- ✓ **Four (4)** state-of-the-art CNC machine-based manufacturing facilities at Ghaziabad & Aurangabad covering a total of 700,000 square feet
- ✓ Dedicated bays and facilities **for stainless steel fabrication.**
- ✓ A highly experienced team of professionals with comprehensive technical expertise in design and manufacturing.



# UTTAM'S MANUFACTURING ADVANTAGE

---

## MANUFACTURING – 100% IN HOUSE





# UTTAM'S MANUFACTURING ADVANTAGE

---

## MANUFACTURING – 100% IN HOUSE



Unit - 2

**UTTAM SUCROTECH**  
INTERNATIONAL



# UTTAM'S MANUFACTURING ADVANTAGE

---

## MANUFACTURING – 100% IN HOUSE



# MANUFACTURING – 100% IN HOUSE

## CNC headstock machining





# MANUFACTURING – 100% IN HOUSE

---

## CNC headstock machining



# MANUFACTURING – 100% IN HOUSE

## CNC crown pinion machining





# MANUFACTURING – 100% IN HOUSE

---

## CNC crown pinion machining



# MANUFACTURING – 100% IN HOUSE

---

## CNC shaft machining



# MANUFACTURING – 100% IN HOUSE

---

## CNC shaft machining





# MANUFACTURING – 100% IN HOUSE

---

## CNC shaft machining



# MANUFACTURING – 100% IN HOUSE

---

## CNC tube plate machining



**UTTAM SUCROTECH**  
INTERNATIONAL



# MANUFACTURING – 100% IN HOUSE

---

## CNC plasma cutting machining



# MANUFACTURING – 100% IN HOUSE

---

## CNC plasma cutting machining





# MANUFACTURING – 100% IN HOUSE

---

## CNC plate bending machining



# MANUFACTURING – 100% IN HOUSE

---

## CNC Press Brake





# MANUFACTURING – 100% IN HOUSE

---



Please click here to run video



# MANUFACTURING – 100% IN HOUSE

---

## Automatic Special Roller Arcing -- Introduced in India



← Please click here to run video



# MANUFACTURING – 100% IN HOUSE

---

## Automatic Special Roller Arcing -- Introduced in India



**UTTAM SUCROTECH**  
INTERNATIONAL

# MANUFACTURING – 100% IN HOUSE

---

## Roller Arcing – while Mills are in operation

We are pioneers in offering the solution for automatic arcing of the Mill rollers, while the plant is in operation.



Please click  
here to run  
video



# MANUFACTURING – 100% IN HOUSE

---

## Bay – Juice Extraction Equipment Manufacturing



# MANUFACTURING – 100% IN HOUSE

---

## Bay – Juice Extraction Equipment Manufacturing





# MANUFACTURING – 100% IN HOUSE

## Bay – Juice Extraction Equipment Manufacturing





# MANUFACTURING – 100% IN HOUSE

---

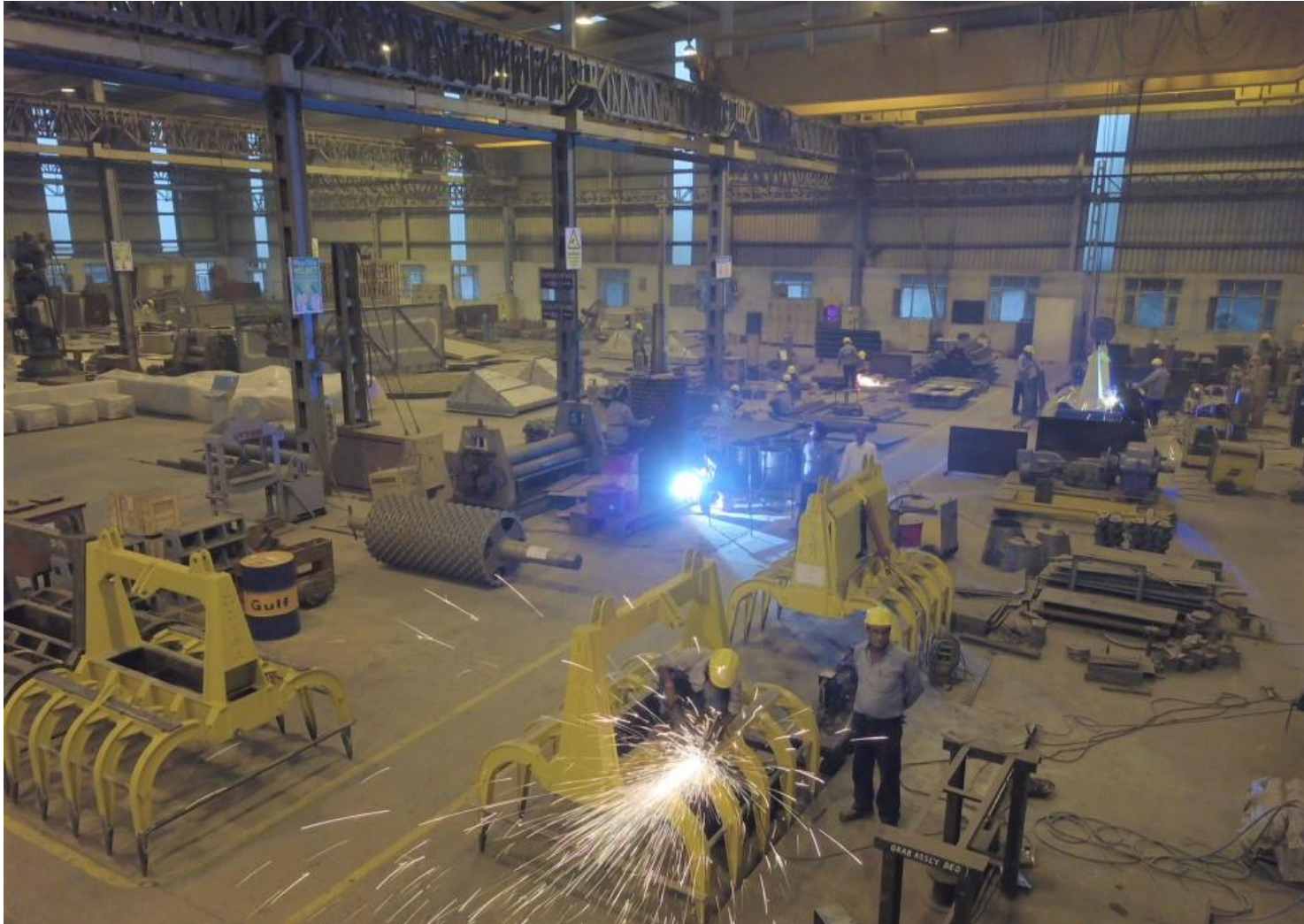
## Bay – Juice Extraction Equipment Manufacturing



# MANUFACTURING – 100% IN HOUSE

---

## Bay – Juice Extraction Equipment Manufacturing





# MANUFACTURING – 100% IN HOUSE

---

## Cane Loader





# MANUFACTURING – 100% IN HOUSE

---

## Hydraulic Grab for Cane Unloader



# MANUFACTURING – 100% IN HOUSE

---

## Crane for Cane Unloader

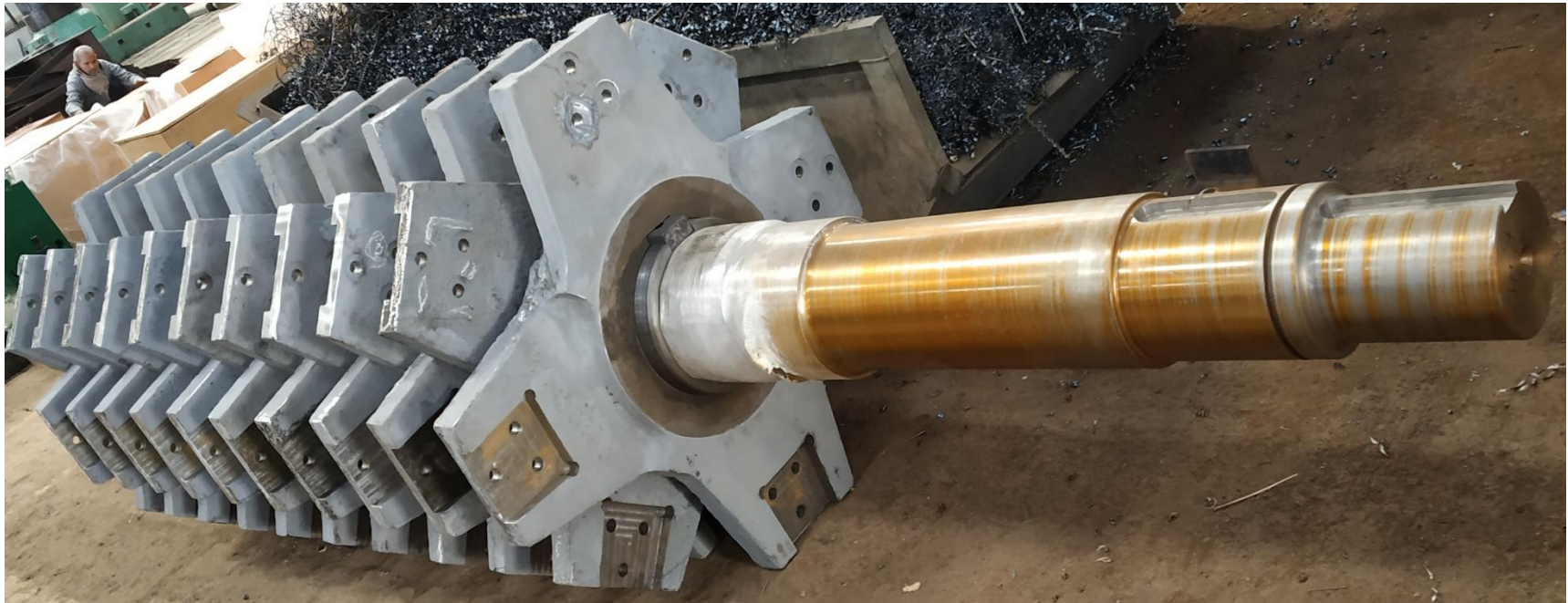




# MANUFACTURING – 100% IN HOUSE

---

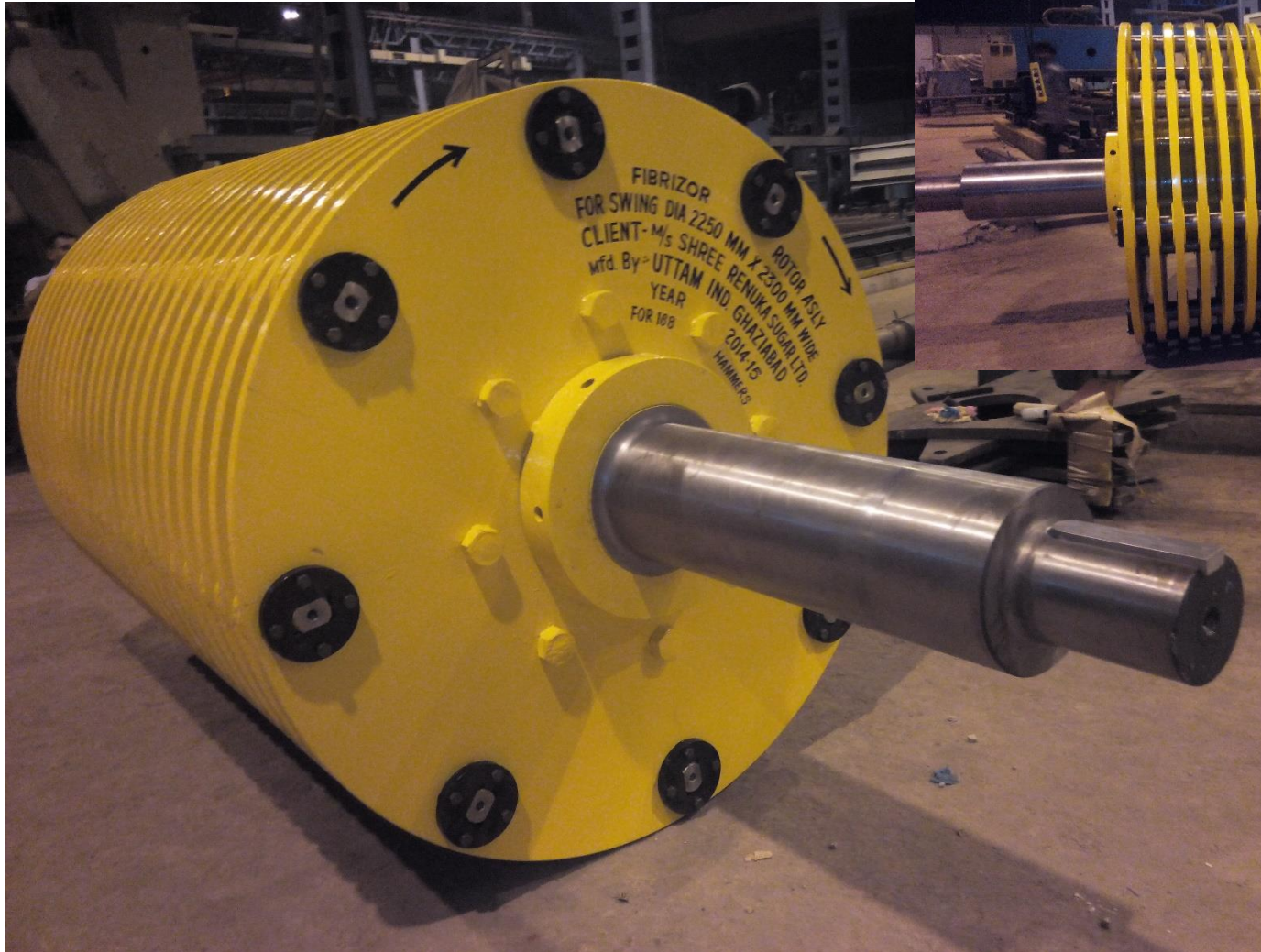
## Chopper Rotor





# MANUFACTURING – 100% IN HOUSE

## Fibrizer Rotor



# MANUFACTURING – 100% IN HOUSE

---

## Mill Roller Shaft





# MANUFACTURING – 100% IN HOUSE

---

## Mill Roller Shaft





# MANUFACTURING – 100% IN HOUSE

---

## Mill Crown Pinion



# MANUFACTURING – 100% IN HOUSE

---

## Mill Crown Pinion





# MANUFACTURING – 100% IN HOUSE

## Mill Headstock



**UTTAM SUCROTECH**  
INTERNATIONAL



# MANUFACTURING – 100% IN HOUSE

---

## Mill Headstock



# MANUFACTURING – 100% IN HOUSE

---

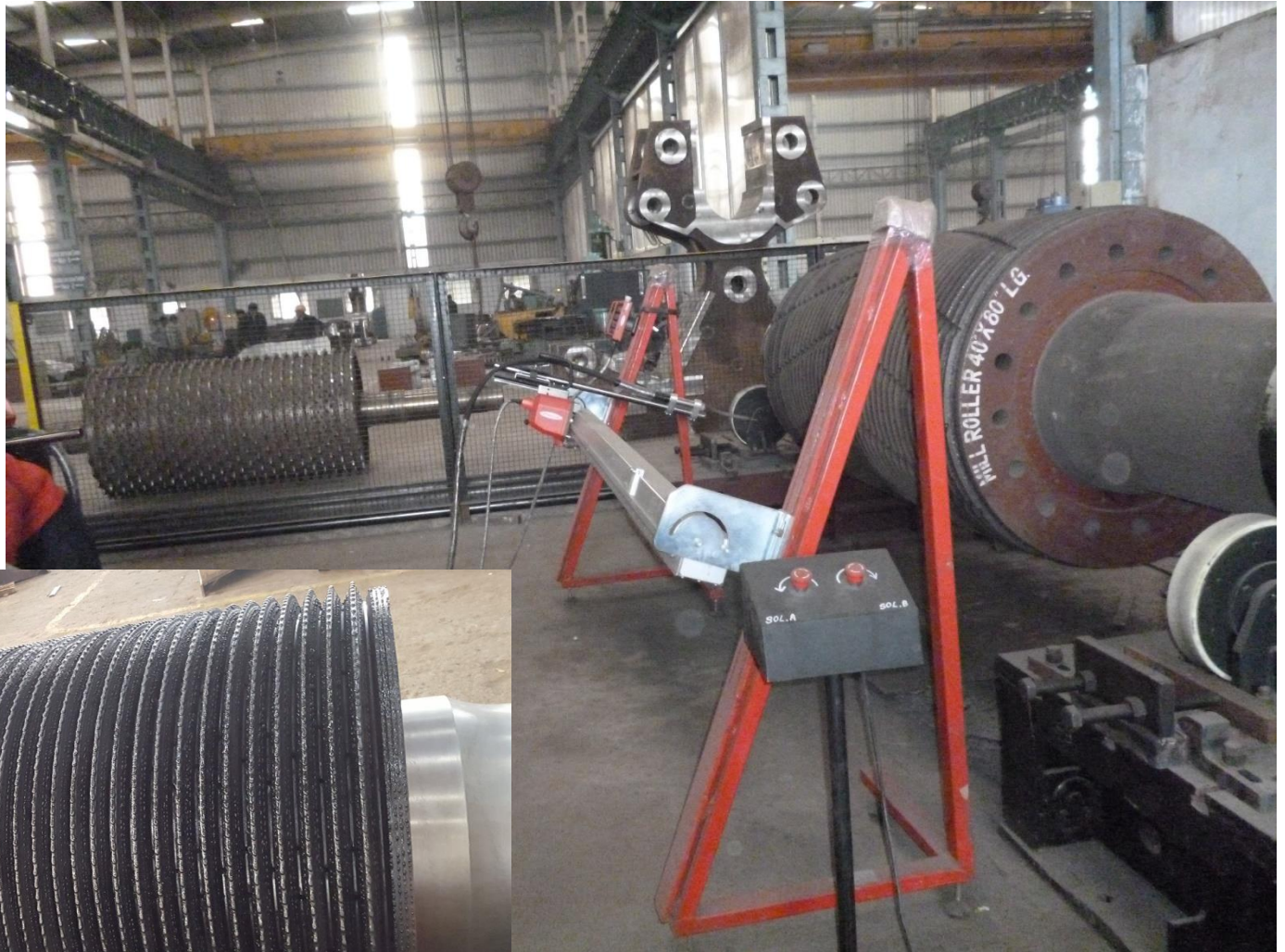
## Mill Headstock





# MANUFACTURING – 100% IN HOUSE

## Roller Arcing



**UTTAM SUCROTECH**  
INTERNATIONAL



# MANUFACTURING – 100% IN HOUSE

---

## Roller – Ready for Despatch



# MANUFACTURING – 100% IN HOUSE

---

## Shot Blasting and Painting booths





# MANUFACTURING – 100% IN HOUSE

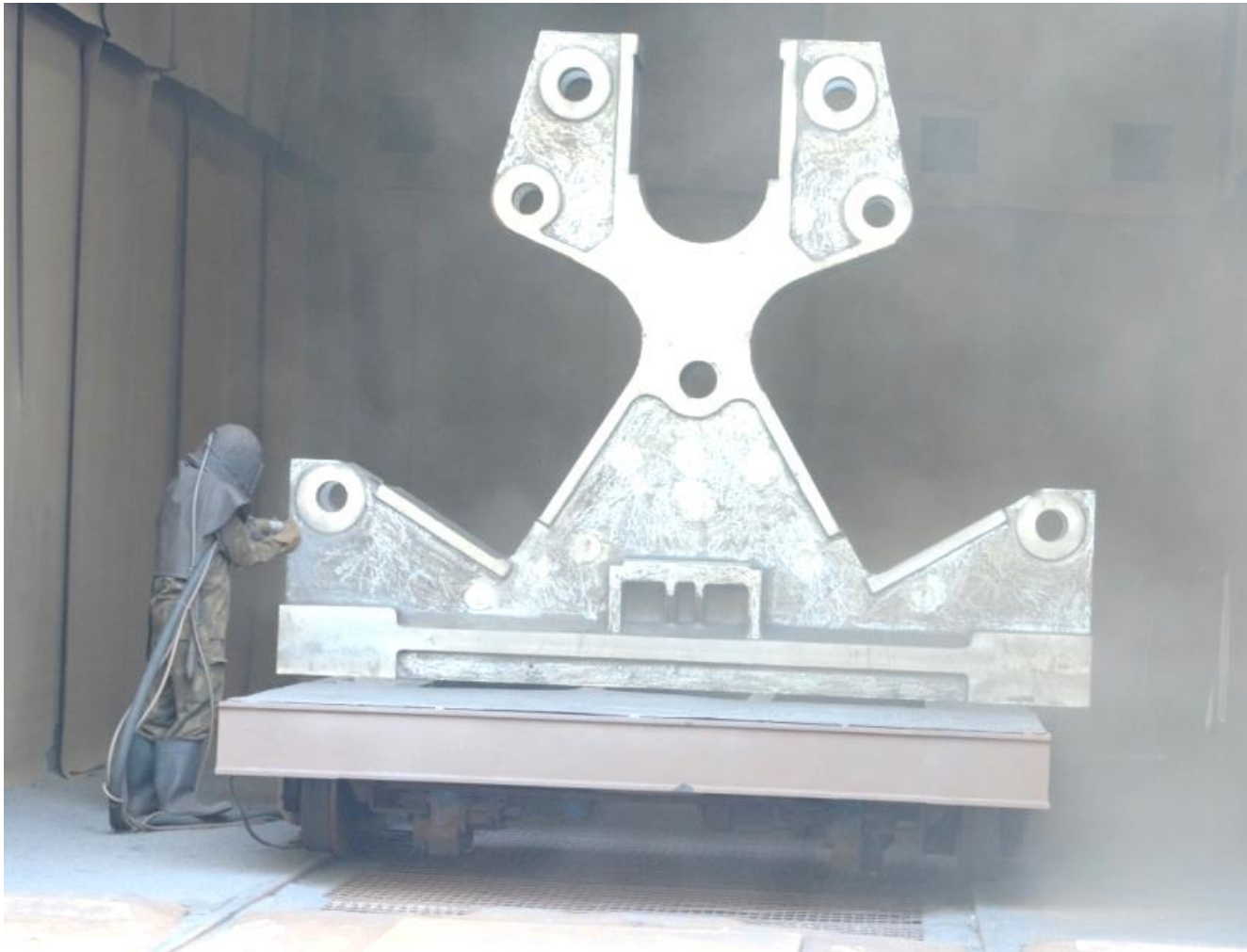
## Shot Blasting



# MANUFACTURING – 100% IN HOUSE

---

## Shot Blasting





# MANUFACTURING – 100% IN HOUSE

## Painting booths



**UTTAM SUCROTECH**  
INTERNATIONAL

# MANUFACTURING – 100% IN HOUSE

---

## Painting booths





# MANUFACTURING – 100% IN HOUSE

---

## Mill Components – Shot-blasted and Painted in booth



# IN-HOUSE TEST ASSEMBLY

**We assemble 100% Mills in-house before dispatch**





# IN-HOUSE TEST ASSEMBLY

**We assemble 100% Mills in-house before dispatch**



**Please click here to run video**

**UTTAM SUCROTECH  
INTERNATIONAL**

# READY FOR DISPATCH

---



**UTTAM SUCROTECH**  
INTERNATIONAL



# MANUFACTURING – 100% IN HOUSE

---

## Carrier Components – Ready for despatch





# MANUFACTURING – 100% IN HOUSE

---

## Bay – Process House Equipment Manufacturing





# MANUFACTURING – 100% IN HOUSE

---

## Bay – Process House Equipment Manufacturing





# MANUFACTURING – 100% IN HOUSE

---

## Bay – Process House Equipment Manufacturing





# MANUFACTURING – 100% IN HOUSE

---

## Bay – Process House Equipment Manufacturing



# MANUFACTURING – 100% IN HOUSE

---

## Rotary Vacuum Filter





# MANUFACTURING – 100% IN HOUSE

---

## Rotary Vacuum Filter



# MANUFACTURING – 100% IN HOUSE

## Clarifier





# MANUFACTURING – 100% IN HOUSE

## Tube Plate Drilling



# MANUFACTURING – 100% IN HOUSE

---

## Falling Film Evaporator





# MANUFACTURING – 100% IN HOUSE

---

## 100 Ton Batch Pan Calandria



# MANUFACTURING – 100% IN HOUSE

---

## Vertical Crystallizer





# MANUFACTURING – 100% IN HOUSE

---

## Vertical Crystallizer



# MANUFACTURING – 100% IN HOUSE

---

## Twin Vertical Crystallizer





# MANUFACTURING – 100% IN HOUSE

## Continuous Vacuum Pan



# MANUFACTURING – 100% IN HOUSE

---

## Continuous Vacuum Pan





# MANUFACTURING – 100% IN HOUSE

---

## Continuous Vacuum Pan



# MANUFACTURING – 100% IN HOUSE

---

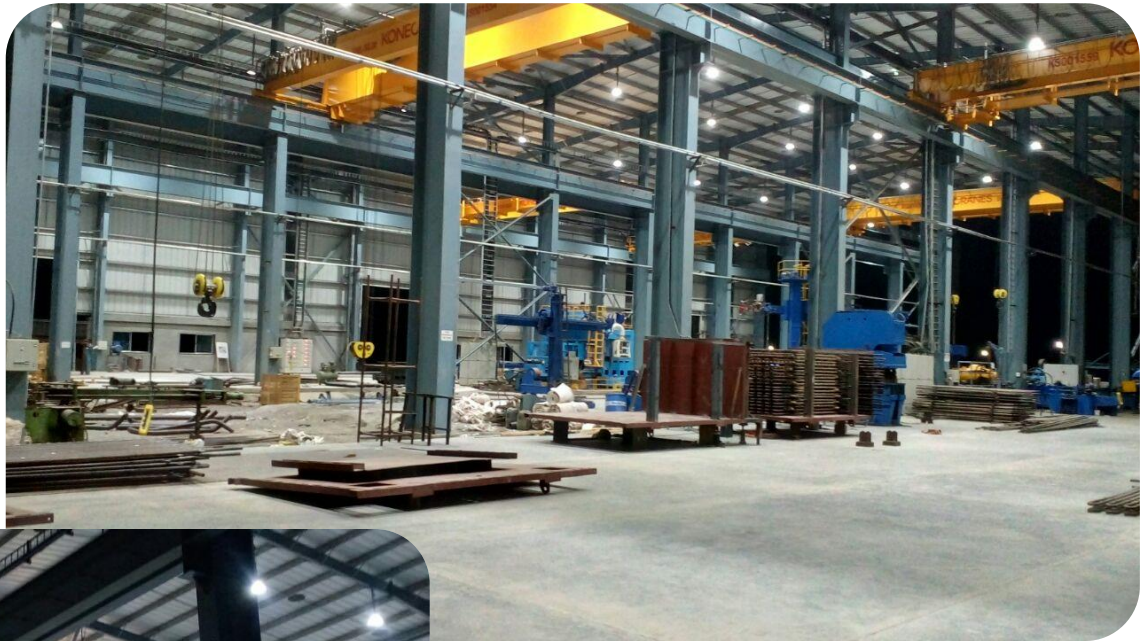
## Boiler Manufacturing Facility





# MANUFACTURING – 100% IN HOUSE

## Boiler manufacturing



# MANUFACTURING – 100% IN HOUSE

---

## Boiler Tube bending machine





# MANUFACTURING – 100% IN HOUSE

---

## Boiler Plate rolling machine



# MANUFACTURING – 100% IN HOUSE

---

## Boiler CNC plate cutting machine





# MANUFACTURING – 100% IN HOUSE

---

## Boiler Drum drilling machine



# MANUFACTURING – 100% IN HOUSE

---

## Boiler Automatic 'C' seam welding machine





# MANUFACTURING – 100% IN HOUSE

---

**Boiler Drum – 110 kg/cm<sup>2</sup>**



# MANUFACTURING – 100% IN HOUSE

## Boiler Drum – 110 kg/cm<sup>2</sup>





# MANUFACTURING – 100% IN HOUSE

---

## Boiler Drum – 110 kg/cm<sup>2</sup>



# MANUFACTURING – 100% IN HOUSE

---

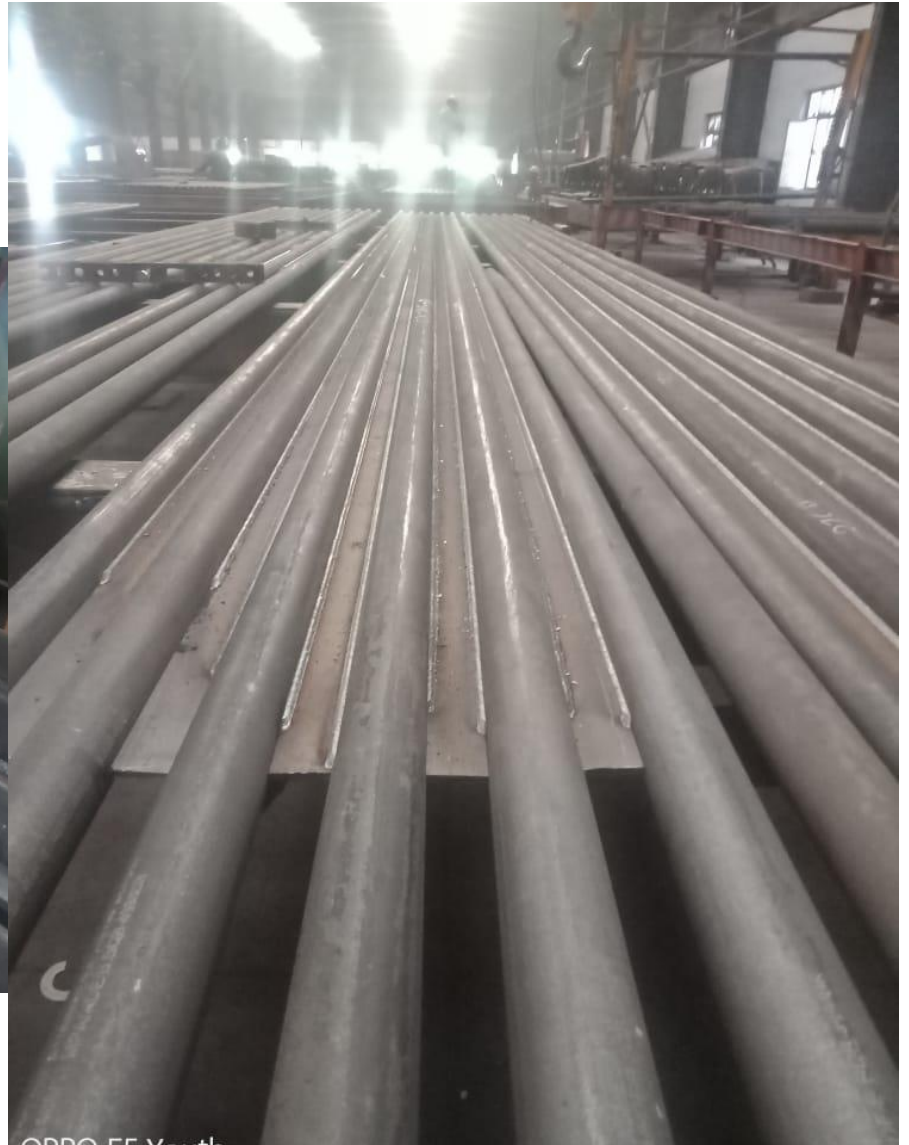
## Boiler Drum Despatch





# MANUFACTURING – 100% IN HOUSE

## Boiler Tubes



# MANUFACTURING – 100% IN HOUSE

## Water Wall Panels

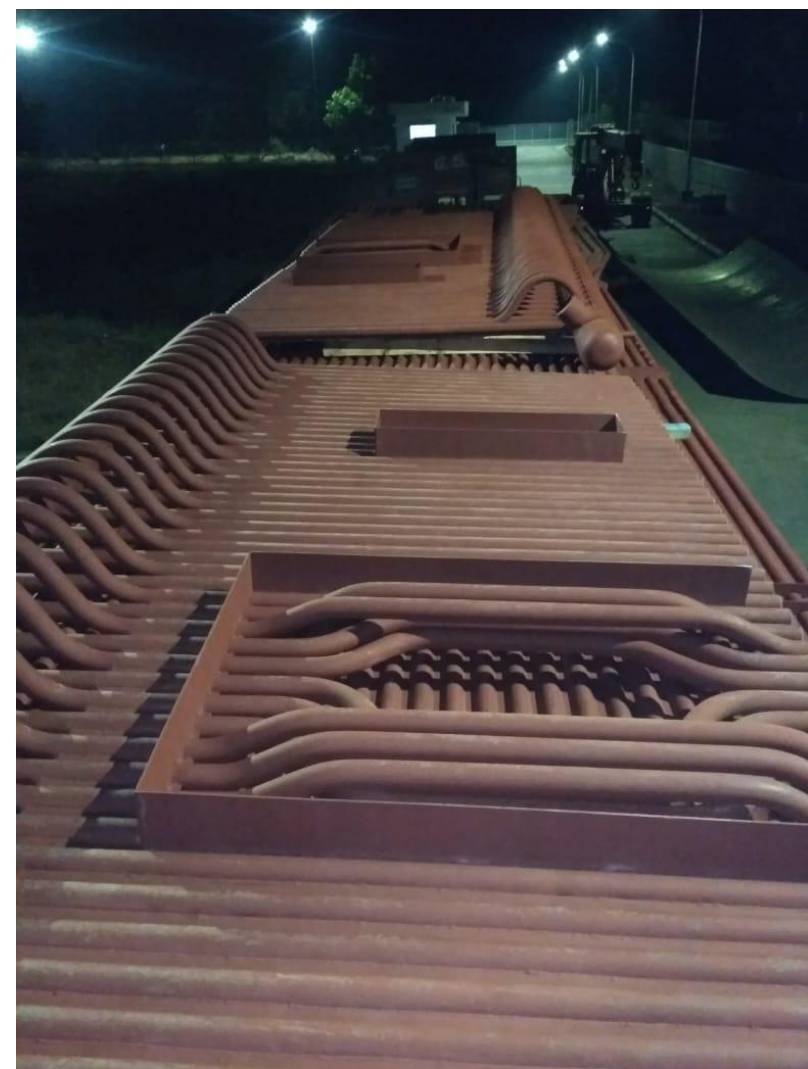




# MANUFACTURING – 100% IN HOUSE

---

## Water Wall Panels



# MANUFACTURING – 100% IN HOUSE

---

## Water Wall Panels





# MANUFACTURING – 100% IN HOUSE

---

## Water Wall Panels – Ready for despatch



# MANUFACTURING – 100% IN HOUSE

---

## Economizer Coils





# MANUFACTURING – 100% IN HOUSE

---

## Economizer Coils



# **DEDICATED FACILITIES FOR SPECIALIZED SS EQUIPMENT FOR DISTILLERY & REFINERY**

---





# **DEDICATED FACILITIES FOR SPECIALIZED SS EQUIPMENT FOR DISTILLERY & REFINERY**

---



# **DEDICATED FACILITIES FOR SPECIALIZED SS EQUIPMENT FOR DISTILLERY & REFINERY**

---





# DEDICATED FACILITIES FOR SPECIALIZED SS EQUIPMENT FOR DISTILLERY & REFINERY

---



# DEDICATED FACILITIES FOR SPECIALIZED SS EQUIPMENT FOR DISTILLERY & REFINERY





# **DEDICATED FACILITIES FOR SPECIALIZED SS EQUIPMENT FOR DISTILLERY & REFINERY**

---



← Please click here to run video

# UTTAM QUALITY SYSTEMS



## CERTIFICATE OF APPROVAL

This is to certify that the Management System of:

**Uttam Sucrotech International Pvt. Ltd.**  
**H-194, Sector-63, Noida - 201 301,**  
**Uttar Pradesh,**  
**INDIA**

has been approved by Lloyd's Register Quality Assurance  
to the following Management System Standards:

**ISO 9001:2015**  
**ISO 14001:2015**  
**OHSAS 18001:2007**

The Management System is applicable to:


**Engineering, Procurement and Project Management for Sugar Sector  
projects of maximum capacity of 24000 TCD & co-generation power  
projects of maximum capacity of 104 MW and projects related to  
distillery.**

Approval  
Certificate No: MUM6019066

Original Approval: 15 October 2014

Current Certificate: 10 October 2017

Certificate Expiry: 14 October 2020

  
Issued by: Lloyd's Register Quality Assurance Limited



001

This certificate replaces and supersedes certificate no. MUM6019066, issue dated 13 May 2016.  
LRQA Ltd, Unit 63 & 64, 6th Floor, Level 5, Kalpataru Square, Kondivita Lane, Off Andheri - Kurla Road, Andheri (East), Mumbai - 400 059, India  
For and on behalf of LRQA Ltd, 1 Trinity Park, Bickenhill Lane, Birmingham, B37 7ES, United Kingdom  
The approval is carried out in accordance with the LRQA assessment and certification procedures and monitored by LRQA.  
The use of the UKAS Accreditation Mark indicates Accreditation in respect of those activities covered by the Accreditation Certificate Number 001

Lloyd's Register Group Limited, its affiliates and subsidiaries, including Lloyd's Register Quality Assurance Limited (LRQA), and their respective officers, employees or agents are, individually and collectively, referred to in this clause as 'Lloyd's Register'. Lloyd's Register assumes no responsibility and shall not be liable to any person for any loss, damage or expense caused by reliance on the information or advice in this document or howsoever provided, unless that person has agreed a contract with the undersigned Lloyd's Register quality for the provision of such information and advice and the information and advice is provided in accordance with the contract.

Uttam Sucrotech International  
is certified for Integrated  
Management System (IMS) by  
Lloyd's Register UK for Sugar  
EPC Projects



**UTTAM SUCROTECH**  
**INTERNATIONAL**



# UTTAM QUALITY SYSTEMS

---

## Manufacturing

- ✓ Quality Assurance Plan – Stage Inspection Activities
- ✓ Welder Qualifications: PQR, WPQ, WPS
- ✓ Welding Procedure and Welder Qualification Records
- ✓ Incoming Material Inspection
- ✓ Welding set-up Inspection
- ✓ Non Destructive Testing (NDT) during welding as per ASME / ISO / EN / BS Standards. 'Penetrant and Radiography Testing' duly vetted by Third Party Inspection Agency like SGS, Lloyds, Bureau Veritas, Intertek, TUV, LIRIS, Lurgi, BAX, MN Dastur, JPMA

# UTTAM QUALITY SYSTEMS

---

## Manufacturing

- ✓ Nozzle Cutting – Elevation and Orientation
- ✓ NDT after final welding – 'Penetrant and Radiography Testing' duly vetted by Third Party Inspection Agency
- ✓ Final dimension check – Assembly & Mock-up duly vetted by Third Party Inspection Agency
- ✓ Hydrostatic and Pneumatic Test duly vetted by Third Party Inspection Agency
- ✓ Pickling and Passivation for Stainless Steel jobs
- ✓ Surface Blasting and Painting for Carbon Steel jobs



# **CODES FOLLOWED FOR DESIGN & CONSTRUCTION**

---

## **PRESSURE VESSELS**

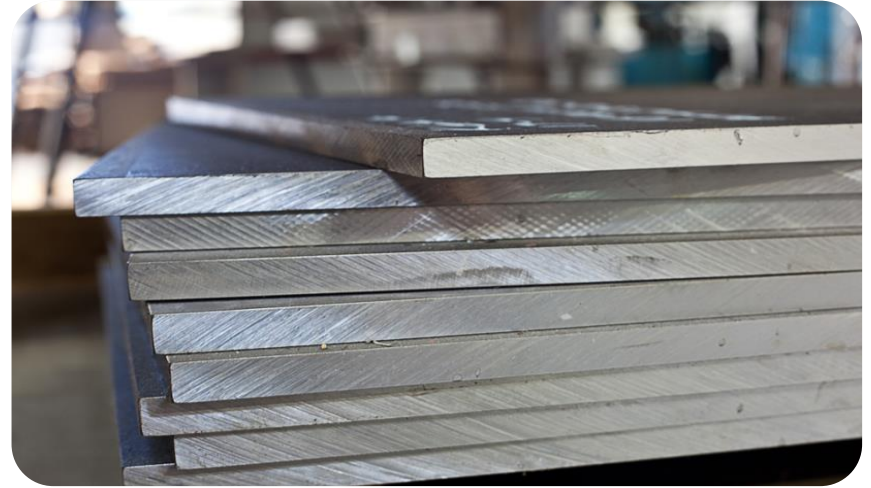
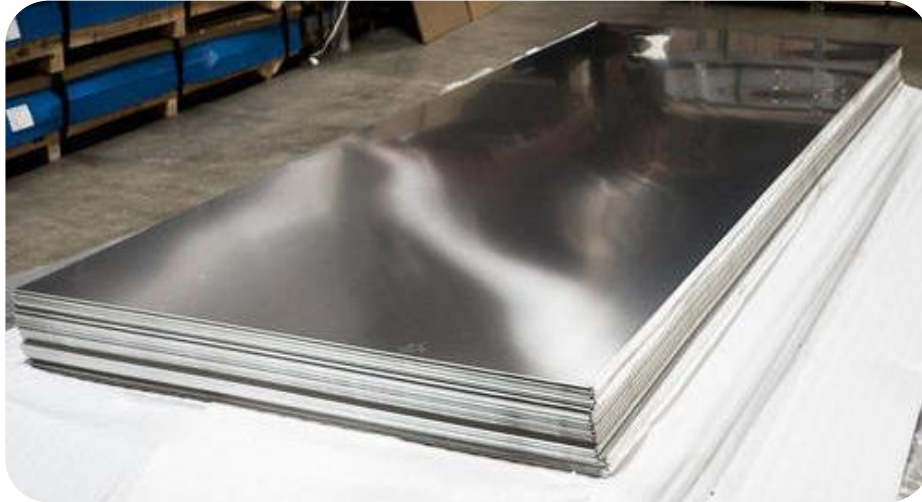
- ✓ ASME, Section 8, Division 1 & 2
- ✓ PD 5500
- ✓ EN 13445
- ✓ TEMA (Tubular Exchange Manufacturer Association)
- ✓ API (American Petroleum Institute)

UTTAM has recently concluded supplies to Promiaz Distillery of Bunge group, Argentina designed to the above specifications

# UTTAM QUALITY ADVANTAGE

---

## Starting with raw material sourcing





# UTTAM QUALITY ADVANTAGE

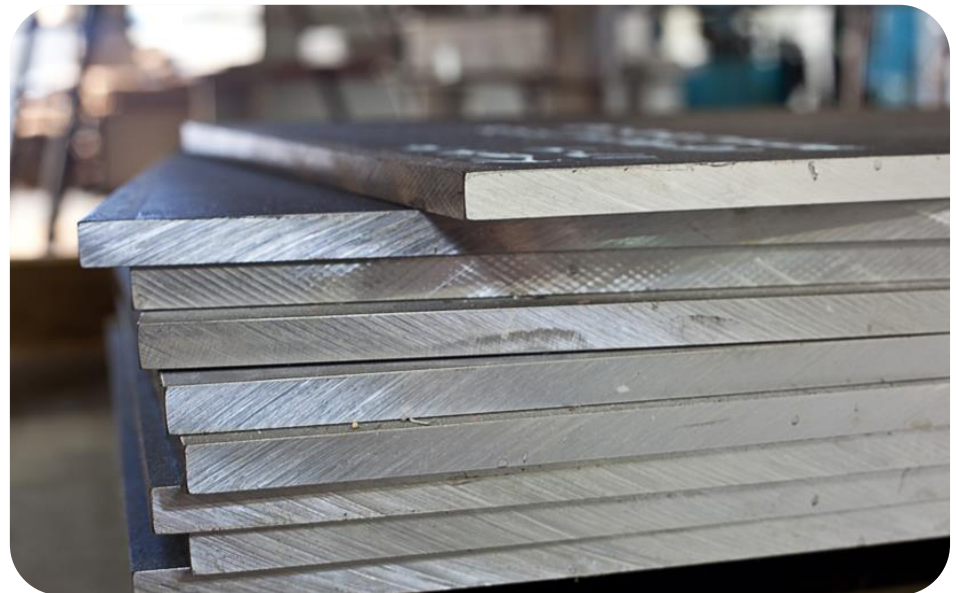
---

## Raw Material Sourcing

### ✓ Carbon Steel

Uttam sources all of its Carbon Steel requirements for fabrication from M/s Steel Authority of India Ltd., a state-owned public sector company and the largest steel producer in India.

(<https://sail.co.in>)



# UTTAM QUALITY ADVANTAGE

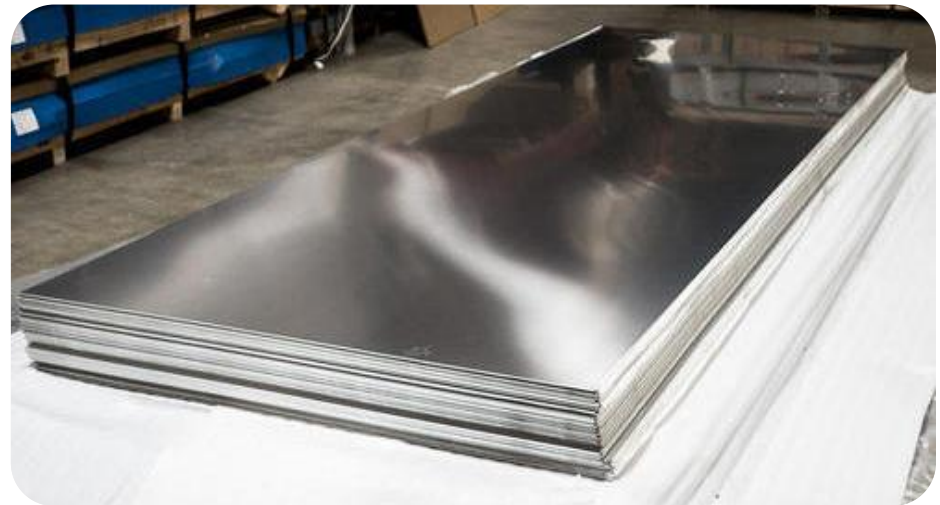
---

## Raw Material Sourcing

### ✓ Stainless Steel

Uttam also sources all of its Stainless Steel requirements for fabrication from Jindal Stainless Limited, which is one of the largest stainless steel conglomerates in India and ranks amongst the top 10 stainless steel conglomerates in the world.

(<https://www.jindalstainless.com> )





# UTTAM QUALITY ADVANTAGE

---

## Raw Material Sourcing

### ✓ Roller Shaft

Uttam is the only Indian Sugar EPC company that sources Roller Shaft Forgings from M/s Bharat Forge Limited, the world's largest forging company with manufacturing facilities spread across India, Germany, Sweden, France and North America.

(<http://bharatforge.com/clients.html>)



KALYANI

BHARAT FORGE



---

# **COMPLETE SUGAR FACTORY EQUIPMENT RANGE**



# CANE HANDLING EQUIPMENT

---

- ✓ Cane Loaders
- ✓ Hydraulic Grabs for Cane Un-loaders
- ✓ Cane Un-loaders
- ✓ Hilo Un-loaders
- ✓ Cane Feeder Tables



# CANE HANDLING EQUIPMENT

---





# CANE HANDLING EQUIPMENT

---



**UTTAM SUCROTECH  
INTERNATIONAL**

# CANE PREPARATION AND CONVEYING EQUIPMENT

- ✓ Main Cane Carrier
- ✓ Cane Chopper
- ✓ Cane Leveller
- ✓ Cane Fibrizer
- ✓ Cane Shredder
- ✓ Rake Elevator
- ✓ Cane Equaliser
- ✓ Donnelly Chute
- ✓ Rake Type Inter-carriers
- ✓ Rotary Juice Screen
- ✓ EOT Crane





# CANE PREPARATION AND CONVEYING EQUIPMENT

---



# CANE MILLING TECHNOLOGY, GONINAN AUSTRALIA

- ✓ **Low Energy, High Efficiency** Milling Technology from one of the leading sugar engineering companies in the world
- ✓ Apart from UTTAM, only HITACHI of Japan has access to Goninan technology
- ✓ The first in the world to design, manufacture the world's biggest sugar mill - **55" x 110"**
- ✓ Complete range of Mills from: **20"x 40" up to 55"x 110" size**
- ✓ Available in 4/5/6 roller configuration





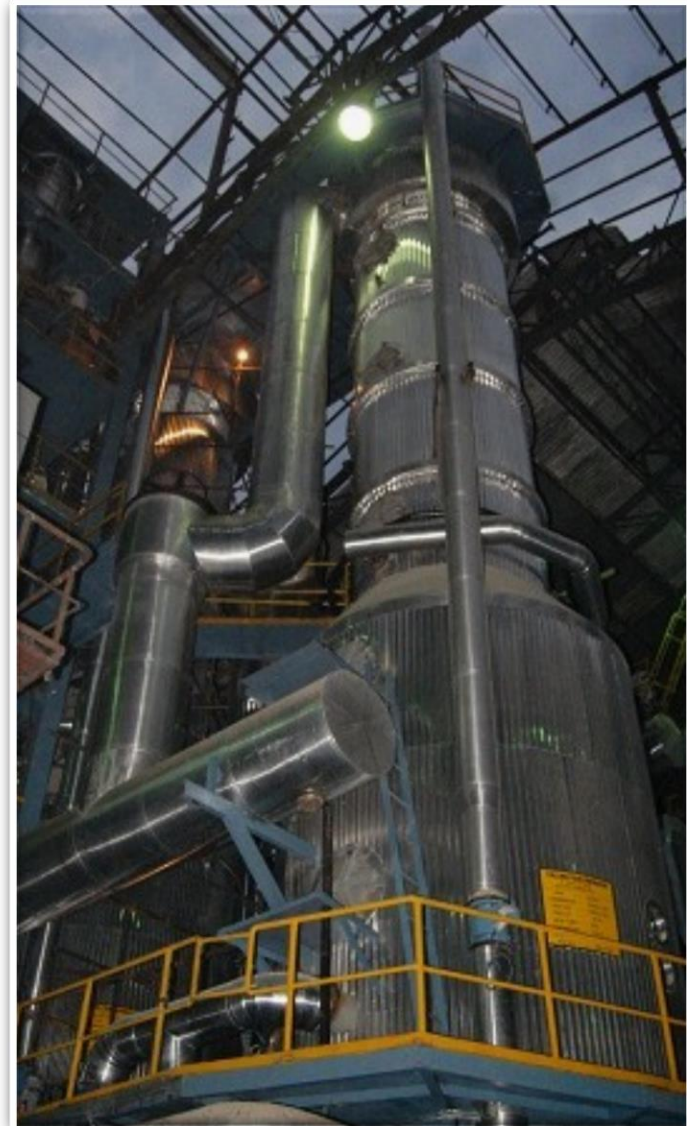
# CANE MILLING TECHNOLOGY, GONIAN AUSTRALIA

- ✓ Low power consumption at differential crushing rates
- ✓ Uttam is the only supplier in India to manufacture the entire Mill on completely **100% CNC machines.**



# PROCESS HOUSE EQUIPMENT

- ✓ Tubular & Direct Contact Juice Heater
- ✓ Juice Clarifier
- ✓ Vacuum Filter
- ✓ Juice Sulphiter
- ✓ Syrup Sulphiter
- ✓ Milk of Lime Station
- ✓ Vacuum Pan – Batch & Continuous
- ✓ Centrifugal – Batch and Continuous
- ✓ Vertical Crystallizer – Mono and Twin
- ✓ Evaporator – Robert, Semi-kestner, Falling Film, Radial
- ✓ Horizontal Crystallizers – Vacuum, Seed, Air & Water Cooled





# PROCESS HOUSE EQUIPMENT

---



# PROCESS HOUSE EQUIPMENT

---





# PROCESS HOUSE EQUIPMENT



# PROCESS HOUSE EQUIPMENT





# BOILERS

---

- ✓ Travelling Grate
- ✓ Pulsating Grate
- ✓ FBC Boiler
- ✓ WHRB Boiler
- ✓ Bottom Hopper Boiler

## Fuel

- ✓ Bagasse and other biomass
- ✓ Coal
- ✓ Lignite
- ✓ Oil
- ✓ Gas



# EXPANSION & MODERNIZATION–EXISTING PLANTS

---

- ✓ Thorough Engineering, Project Monitoring & Execution at Site & HQ
- ✓ *In house Manufacturing of Sugar Plant & Machinery*
- ✓ *Local Outsourcing (Country Specific)*
  - *Material*
  - *Manpower*
- ✓ Rigorous Site Inspections
- ✓ *Dedicated Logistics Support (from our Global Offices)*
- ✓ Extensive Training Programs
  - *Onsite training by our experienced team*
  - *Training of local factory staff at our own Sugar Factories*



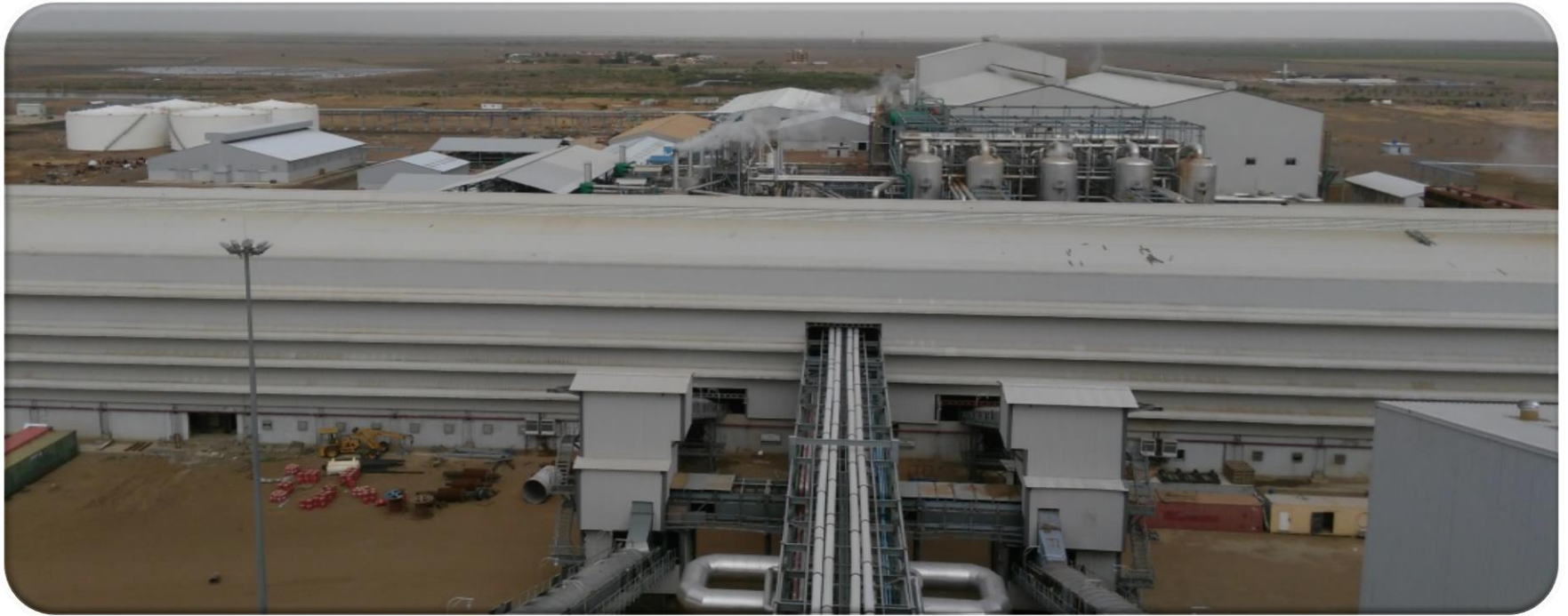


---

# **SOME RECENT DELIVERIES & INSTALLATIONS**

# WHITE NILE SUGAR COMPANY, SUDAN

---





# WHITE NILE SUGAR COMPANY, SUDAN

Uttam Sucrotech International has completed execution of Africa's largest Greenfield Sugar project, a 25,000 TCD Sugar Plant:

- ✓ 2 x 21 MW + 2 x 31 MW Turbines (Total 104 MW) co-generation
- ✓ 12 Nos. - 45" x 90" mills in 2 tandems for juice extraction



# WHITE NILE SUGAR COMPANY, SUDAN

---





# WHITE NILE SUGAR COMPANY, SUDAN

---





# WHITE NILE SUGAR COMPANY, SUDAN

---





# WHITE NILE SUGAR COMPANY, SUDAN



# WHITE NILE SUGAR COMPANY, SUDAN

---





# WHITE NILE SUGAR COMPANY, SUDAN

---



# WHITE NILE SUGAR COMPANY, SUDAN

---





# WHITE NILE SUGAR COMPANY, SUDAN

---



# WONJI/SHOA SUGAR FACTORY, ETHIOPIA

---





# WONJI/SHOA SUGAR FACTORY, ETHIOPIA

---

EPC/Turnkey contract for a Green-field 6,250 TCD plant, with power co-generation:

- ✓ 2 x 135 TPH 67 ata 515°C Boilers
- ✓ 32 MW Double condensing Turbine
- ✓ Complete Process House



**UTTAM SUCROTECH**  
INTERNATIONAL

# WONJI/SHOA SUGAR FACTORY, ETHIOPIA

---





# LAUH PURUSH SARDAR PATEL SSK, INDIA

---



# LAUH PURUSH SARDAR PATEL SSK, INDIA

---

EPC Greenfield Sugar Project:

- ✓ 2500 TCD Sugar Plant
- ✓ 4 Nos. - 33" x 66" mills with TRPF
- ✓ 2500 TCD Process House
- ✓ 1 x 75 TPH 87 ata 515°C Boilers
- ✓ 1 x 9 MW + 1 x 5 MW Turbines
- ✓ (Total 14 MW) co-generation
- ✓ Complete Civil Works





# LAUH PURUSH SARDAR PATEL SSK, INDIA

---



# AMBALIKA SUGARS, INDIA

---





# AMBALIKA SUGARS, INDIA

---

EPC Greenfield Sugar Project:

- ✓ 5000 TCD Sugar Plant
- ✓ 4 Nos. - 34" x 68" mills
- ✓ 5000 TCD Process House
- ✓ 1 x 50 TPH 45 ata Boiler
- ✓ 1 x 6 MW Turbine



# RIOPAILA CASTILLA, S.A, COLOMBIA

---





# RIOPAILA CASTILLA, S.A, COLOMBIA

---

## New Multi-fuel Boiler:

- ✓ Capacity: 150 t/h
- ✓ Pressure: 65.7 kg/cm<sup>2</sup> (a)
- ✓ Temperature: 490°C
- ✓ Boiler type: Travelling Grate
- ✓ Fuel: Bagasse, Coal and Oil



# RIOPAILA CASTILLA, S.A, COLOMBIA

---





# RIOPAILA CASTILLA, S.A, COLOMBIA

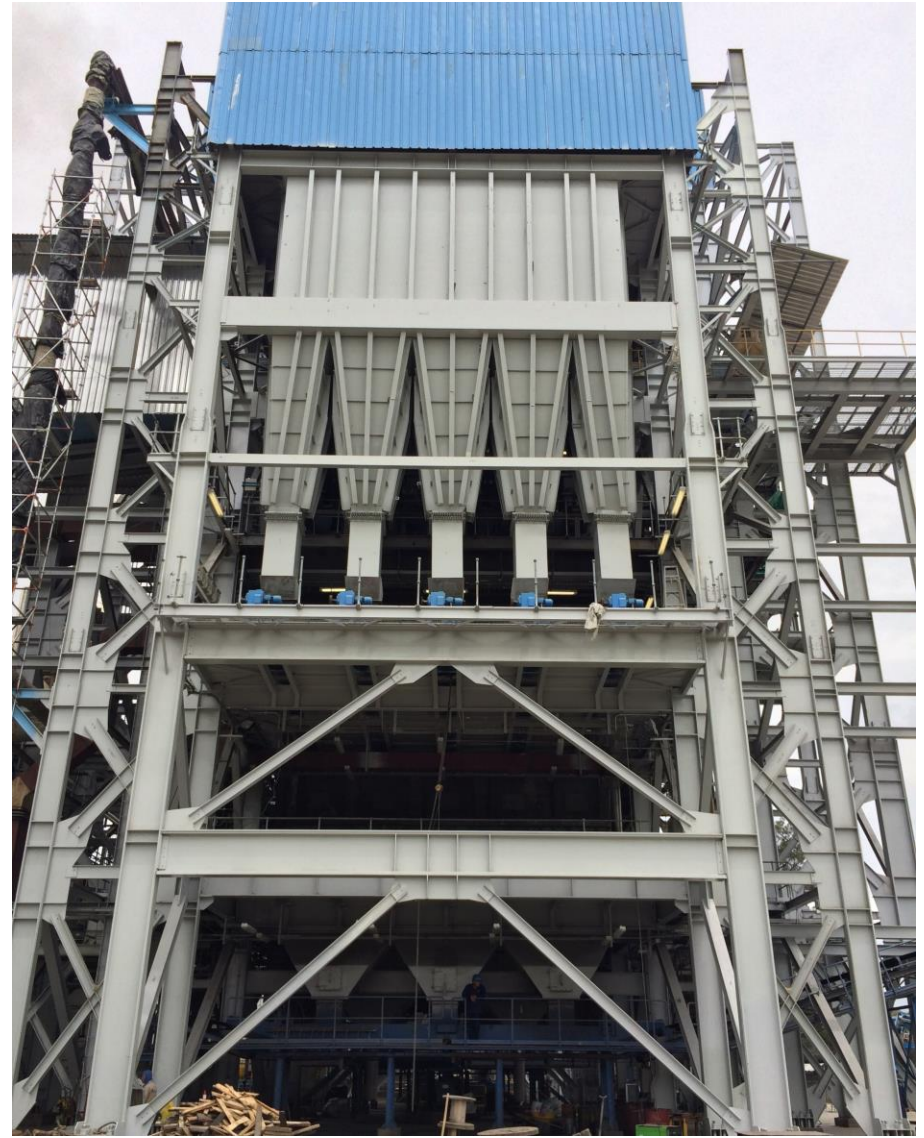
---





# RIOPAILA CASTILLA, S.A, COLOMBIA

---





# RECENTLY EXECUTED/UNDER EXECUTION PROJECTS

Client	Project Details
Panipat Co-operative Sugar Mills, India	EPC contract for supply & commissioning of 5000 TCD Sugar Plant, 28 MWh Co-gen
Kinyara Sugar Ltd. Uganda	7500 TCD, Juice Extraction Plant
Ramala Co-operative Sugar Mills, India	EPC contract for supply & commissioning of 5000 TCD Sugar Plant, 27 MWh Co-gen
Kranti Sugar Mills, India	EPC contract for supply & commissioning of 2500 TCD Sugar Plant
PTPN XI, (Djatiroto) Indonesia	Expansion from 6000 TCD to 10000 TCD 29 MWh Co-gen
DSCL Hariawan, UP, India	5000 TCD, Juice Extraction Plant

# RECENTLY EXECUTED/UNDER EXECUTION PROJECTS

Client	Project Details
West Kenya Sugar, Kakamega, Kenya	3000 TCD Expandable to 7500 TCD, Juice Extraction Plant
West Kenya Sugar, Naitiri, Kenya	3000 TCD Expandable to 7500 TCD, Juice Extraction Plant
Horyal Investment Holding Company Uganda	EPC contract for supply & commissioning of 1650 TCD Sugar Plant, 6 MWh Co-gen
Tikula Sugar Mills Limited, U.P., India	EPC contract for complete Juice Extraction Plant expansion from 7500 TCD to 9000 TCD
West Kenya Sugar, Kakamega, Kenya	3000 TCD Expandable to 7500 TCD, Juice Extraction Plant



# RECENTLY EXECUTED/UNDER EXECUTION PROJECTS

---

Client	Project Details
Royal Swaziland Sugar Corporation, Swaziland	Process House Equipment
Promiaz Distillery, Argentina	75 KLPD Distillery Equipment
NV Loc & Company, Vietnam	Process House Equipment
PT Gunung Madu Plantations, Indonesia	Process House Equipment

---

# NON SUGAR EQUIPMENT





# NON SUGAR EQUIPMENT

---

## HYDRAULIC NON RETURN VALVE DIA 6300MM

**Client : SMS (Germany)**

*FOR 2 x 175 TON BOF GAS CLEANING PLANT*



# NON SUGAR EQUIPMENT

## WATER SEALED CHECK VALVE

Client : SMS (Germany)



DN--1500MM



DN--1300MM



**UTTAM SUCROTECH**  
INTERNATIONAL



# NON SUGAR EQUIPMENT

## WATER SEALED CHECK VALVE

Client : SMS (Germany)



110T LD

Project : ISSCO BURNPUR

**UTTAM SUCROTECH**  
INTERNATIONAL

# NON SUGAR EQUIPMENT

TWIN LADLE HEATING FURNACE SUPAR STR.

Client : SMS (Germany)





# NON SUGAR EQUIPMENT

---

## SNORKEL MAINTENANCE CAR

Client : SMS (Germany)



# NON SUGAR EQUIPMENT

---

## TUNDISH TILTING BEAM

Client : SMS (Germany)





# NON SUGAR EQUIPMENT

## HOT METAL TRANSFER CAR

Client : SMS (Germany)



# NON SUGAR EQUIPMENT

## WATER SEALED CHECK VALVE

Client : SMS (Germany)



DN-1500MM



ND-2600

**UTTAM SUCROTECH**  
INTERNATIONAL



# NON SUGAR EQUIPMENT

---

## SLAG RETAINING DEVICE

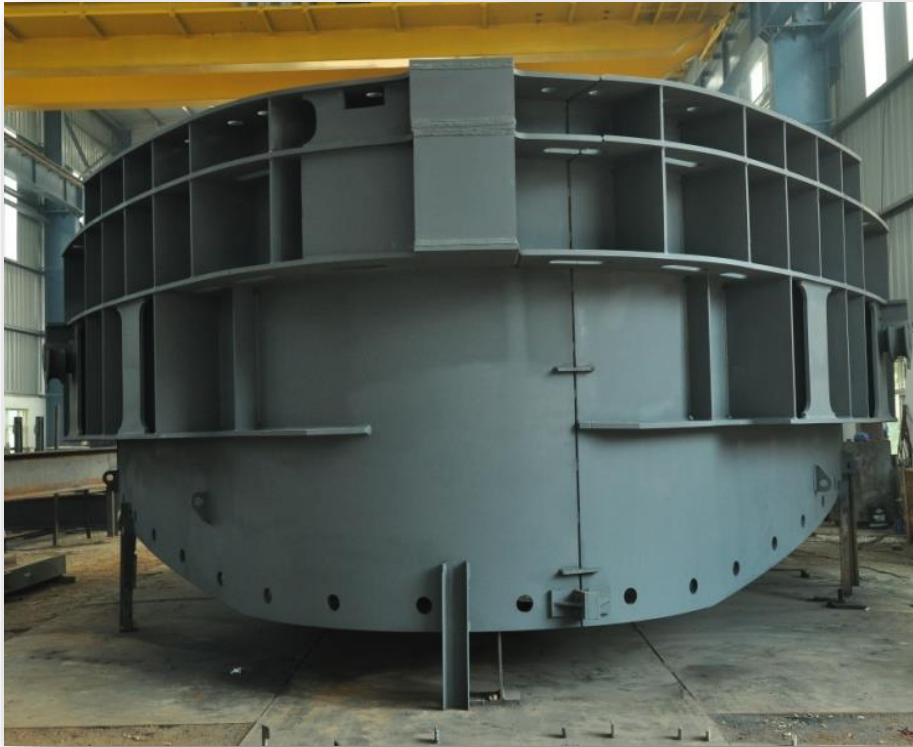
Client : SMS (Germany)



# NON SUGAR EQUIPMENT

## LOWER SHELL

Client : SMS (Germany)





# NON SUGAR EQUIPMENT

## CROSS TRANSFER DEVICES

Client : SMS (Germany)



**UTTAM SUCROTECH**  
INTERNATIONAL

# NON SUGAR EQUIPMENT

## EAF EQUIPMENT

Client : SMS (Germany)





# NON SUGAR EQUIPMENT

## FURNACE GANTRY

Client : SMS (Germany)



# NON SUGAR EQUIPMENT

---

## ROOF LIFTING MECHANISM

Client : SMS (Germany)





# NON SUGAR EQUIPMENT

## BEARING PEDASTALS DRIVE & NON DRIVE SIDE

Client : SMS (Germany)



# NON SUGAR EQUIPMENT

## LANCE BODY ARRANGEMENT

Client : SMS (Germany)





# NON SUGAR EQUIPMENT

## LANCE TROLLEY ARRANGEMENT

Client : SMS (Germany)



# NON SUGAR EQUIPMENT

## TEEMING LADLE

Client : SMS (Germany)





# NON SUGAR EQUIPMENT

## ROLLER TABLE WITH 09 ROLL

Client : SMS (Germany)



# NON SUGAR EQUIPMENT

## PINCH ROLL ENTRY SIDE & EXIT SIDE

Client : SMS (Germany)





# NON SUGAR EQUIPMENT

---

## SLAB POSTIONING DEVICE

Client : SMS (Germany)



# NON SUGAR EQUIPMENT

## CONVERTOR RELINING DEVICE FORTATA KALINGANAGAR





# NON SUGAR EQUIPMENT

## SNORKAL MAINTENANCE CAR WITH DIGGER TEETH



# NON SUGAR EQUIPMENT

## TUYERE STOCK ASSEMBLY

Client : DANIELI CORUS (Italy)





# NON SUGAR EQUIPMENT

## TUYERE STOCK ASSEMBLY

Client : DANIELI CORUS (Italy)

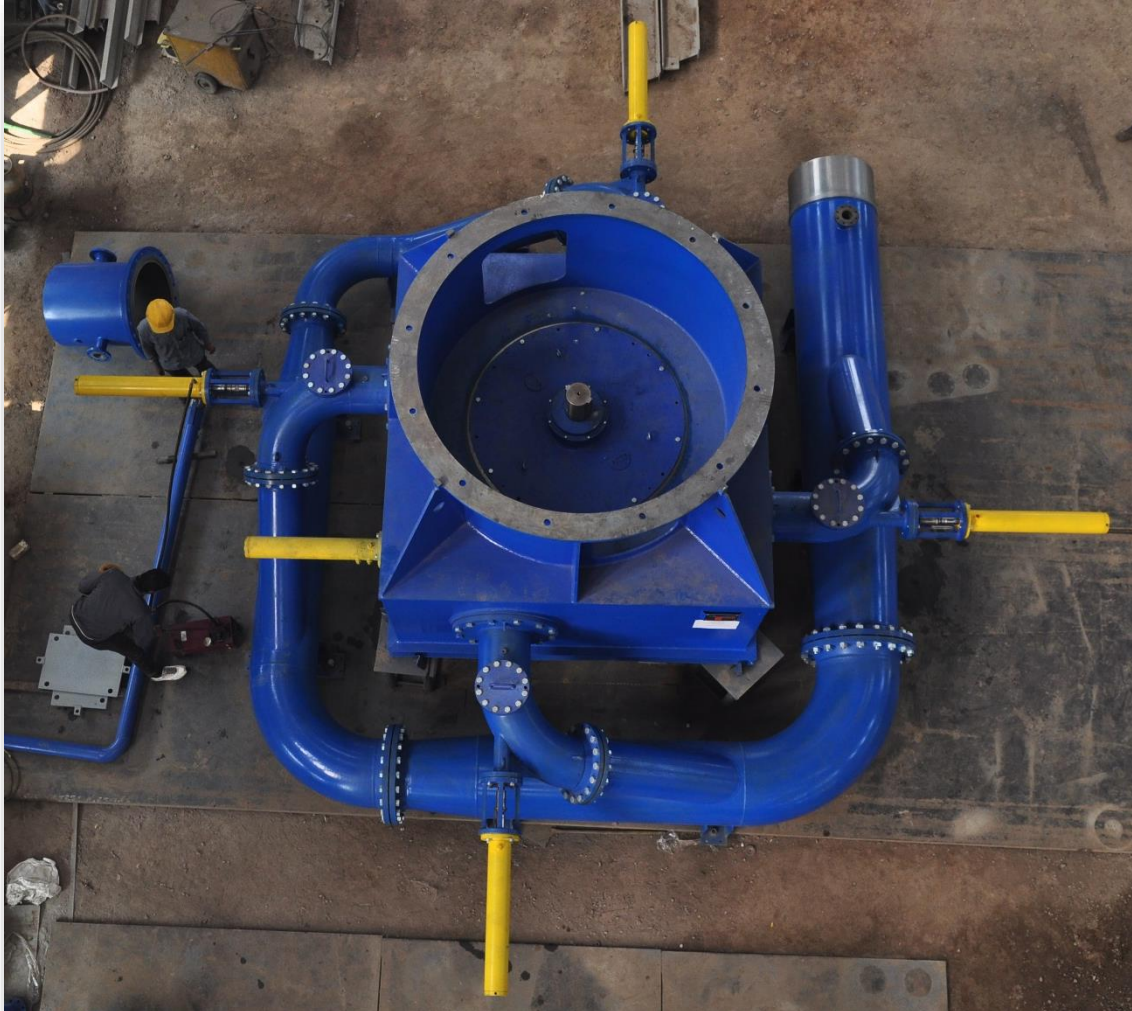


# NON SUGAR EQUIPMENT

---

## JET PELTON TURBINE COMPONENT 3.3 MEGAWATT

Client : MECAMIDI HPP (India)





# NON SUGAR EQUIPMENT

---

## JET PELTON TURBINE COMPONENT 3.3 MEGAWATT

Client : MECAMIDI HPP (India)



# NON SUGAR EQUIPMENT

## PELTON TURBINE COMPONENTS 3.3 MEGAWATT

Client : MECAMIDI HPP (India)

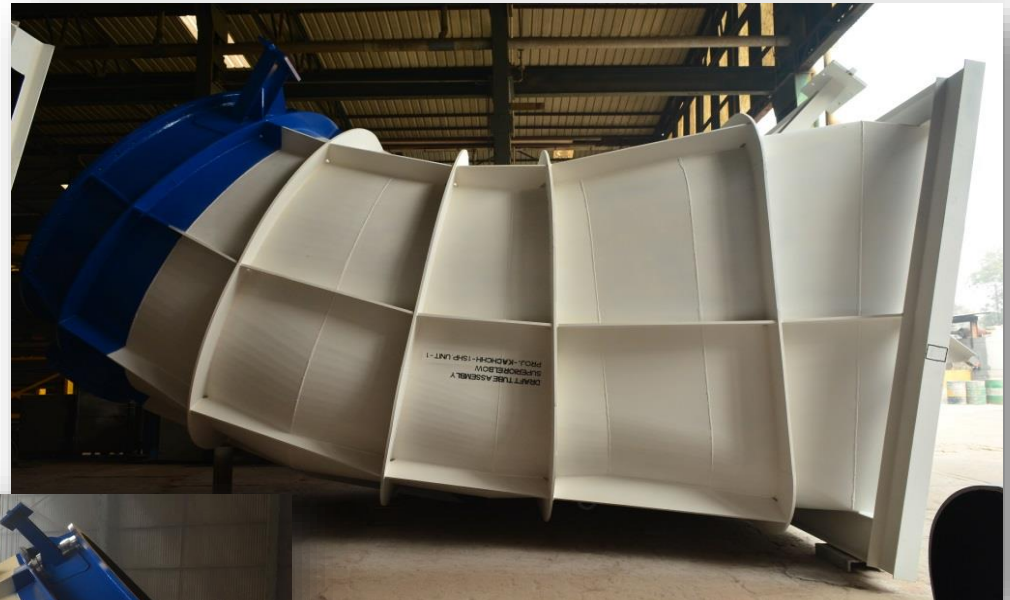




# NON SUGAR EQUIPMENT

## SUPERIOR ELBOW

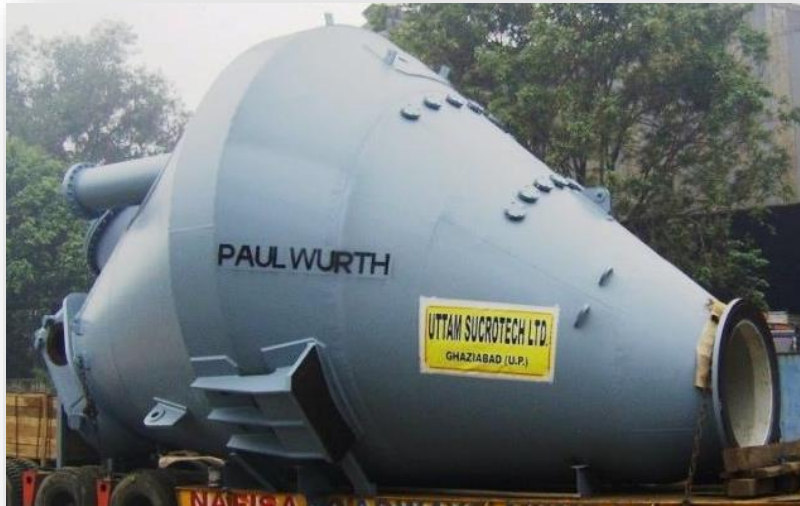
Client : MECAMIDI HPP (India)



# NON SUGAR EQUIPMENT

## MATERIAL HOPPER

Client : PAUL WURTH (Luxembourg)





# NON SUGAR EQUIPMENT

## DISTRIBUTION ROCKER

Client : PAUL WURTH (Luxembourg)



# NON SUGAR EQUIPMENT

---

## STATIONARY CHUTE

Client : PAUL WURTH (Luxembourg)





# NON SUGAR EQUIPMENT

---

## VALVE ACTUATION UNIT

Client : PAUL WURTH (Luxembourg)



# NON SUGAR EQUIPMENT

## UPPER AND LOWER SEAL VALVES WITH CASING

Client : PAUL WURTH (Luxembourg)



UPPER SEAL VALVE



LOWER SEAL VALVE



# NON SUGAR EQUIPMENT

## BLEEDER VALVE ND630

Client : PAUL WURTH (Luxembourg)



# NON SUGAR EQUIPMENT

## DISTRIBUTION CHUTE

Client : PAUL WURTH (Luxembourg)



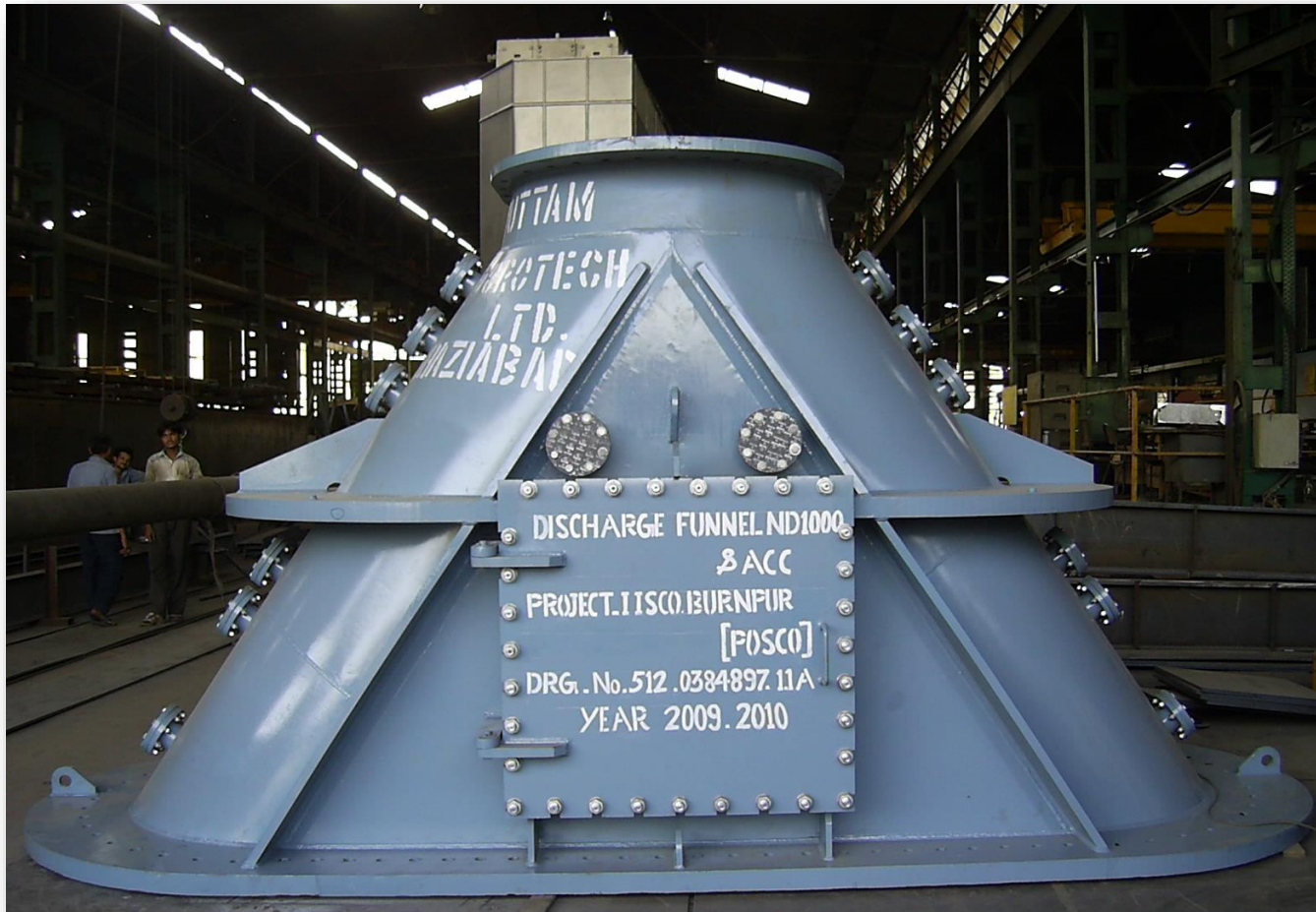
**UTTAM SUCROTECH**  
INTERNATIONAL



# NON SUGAR EQUIPMENT

## DISCHARGE FUNNEL

Client : PAUL WURTH (Luxembourg)



**UTTAM SUCROTECH**  
INTERNATIONAL

# NON SUGAR EQUIPMENT

## WATER DISTRIBUTION SYSTEM INBA NORTH AND SOUTH COOLING TOWER

Client : PAUL WURTH (Luxembourg)





# NON SUGAR EQUIPMENT

## BLOW PIPE

Client : PAUL WURTH (Luxembourg),  
DANIELI CORUS (Italy)



# NON SUGAR EQUIPMENT

## DOWNLEG ASSEMBLY

Client : PAUL WURTH (Luxembourg)





# NON SUGAR EQUIPMENT

## DE-WATERING BIN

Client : PAUL WURTH (Luxembourg)



# NON SUGAR EQUIPMENT

---

## DE-WATERING BIN

Client : PAUL WURTH (Luxembourg)



**UTTAM SUCROTECH**  
INTERNATIONAL



# NON SUGAR EQUIPMENT

## Street Furniture

Client : JCDecaux (France)

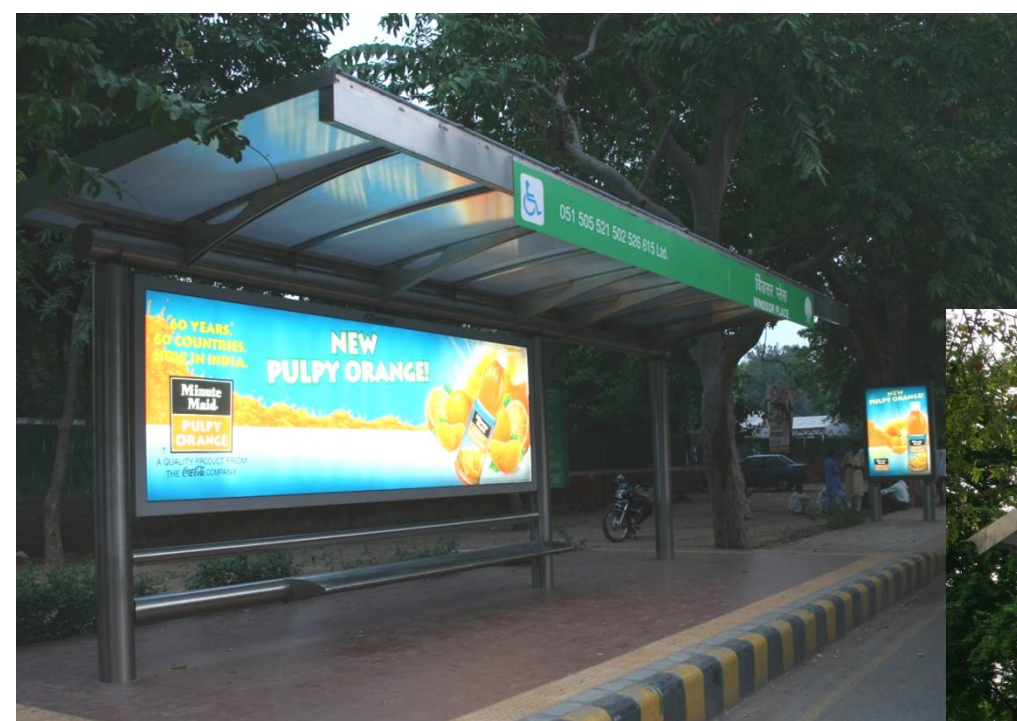




# NON SUGAR EQUIPMENT

## Street Furniture

Client : JCDecaux (France)



**UTTAM SUCROTECH**  
INTERNATIONAL



---

# ASSOCIATE GROUP COMPANIES



**CASTINGS**

# ASSOCIATE GROUP COMPANIES – RP ALLOYS

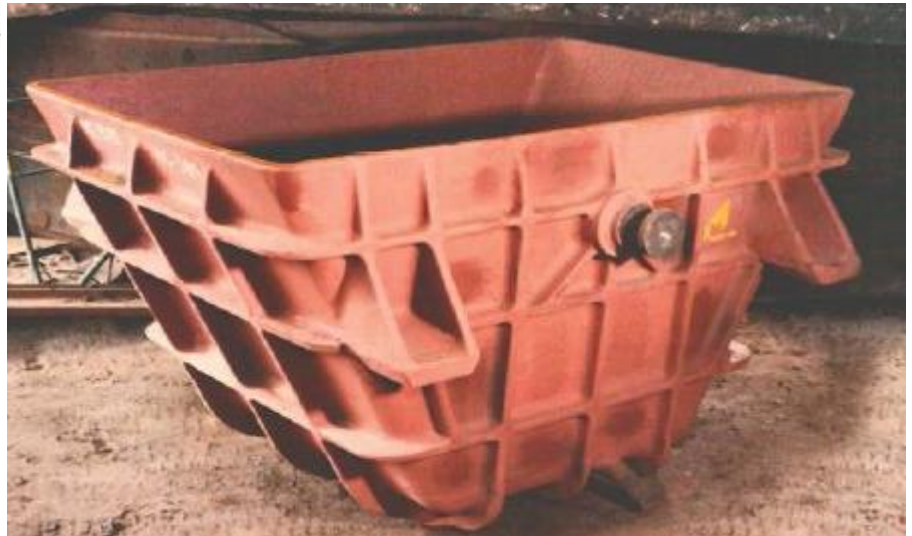
---





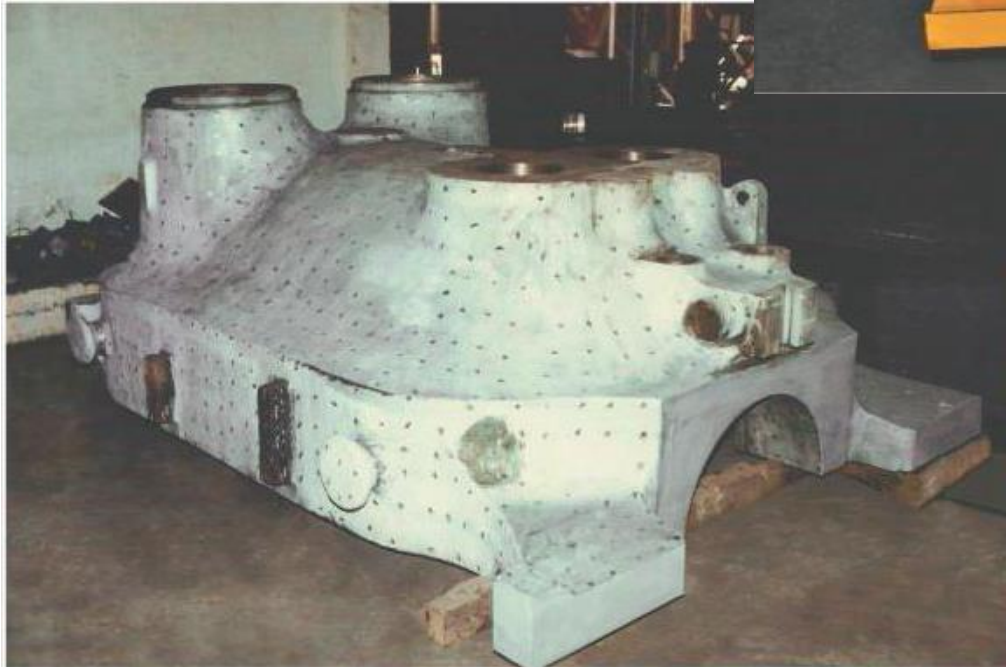
# ASSOCIATE GROUP COMPANIES – RP ALLOYS

---



# ASSOCIATE GROUP COMPANIES – RP ALLOYS

---





# ASSOCIATE GROUP COMPANIES – RP ALLOYS

---



# ASSOCIATE GROUP COMPANIES – RP ALLOYS

---

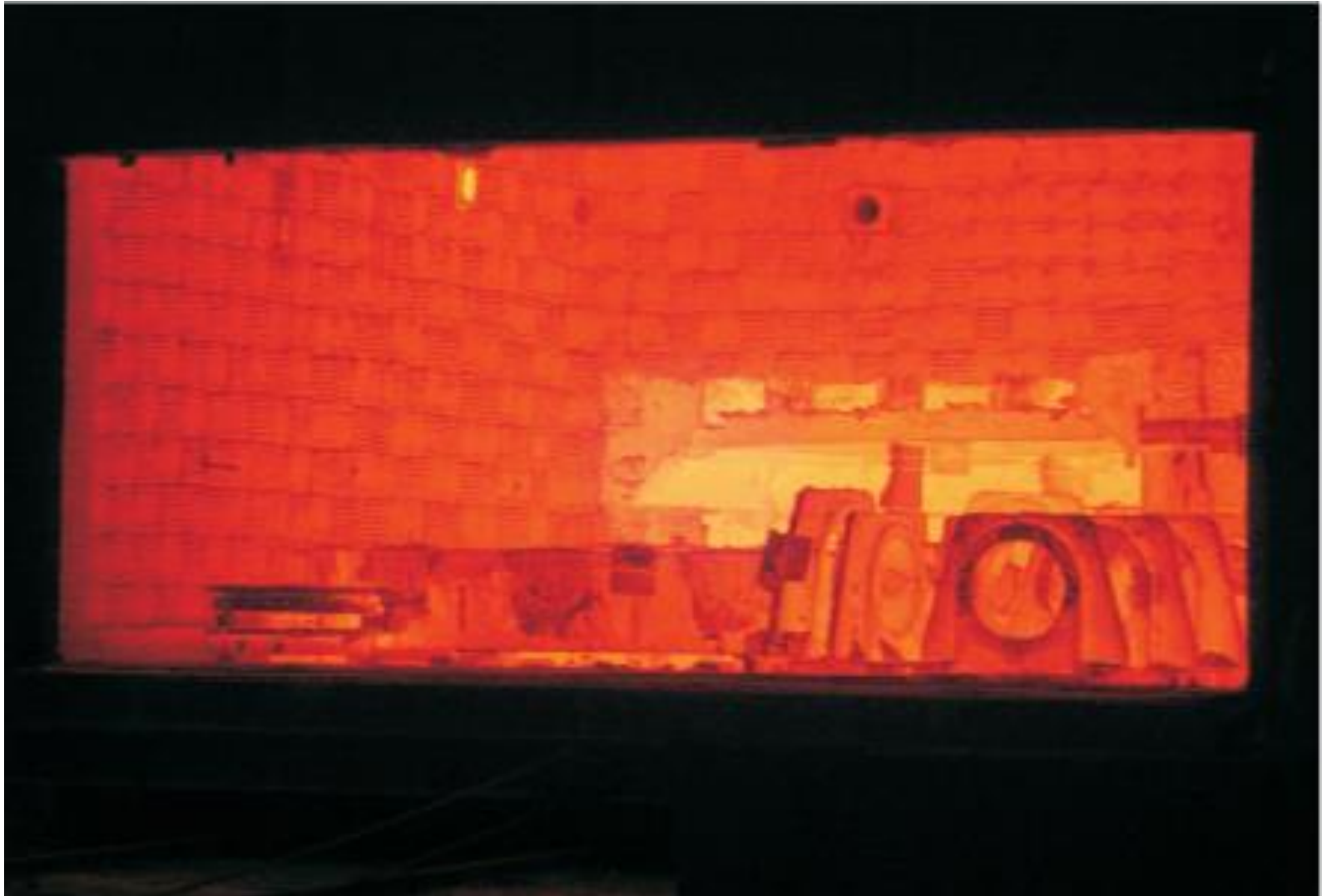


**UTTAM SUCROTECH**  
INTERNATIONAL



# ASSOCIATE GROUP COMPANIES – RP ALLOYS

---



# ASSOCIATE GROUP COMPANIES – RP ALLOYS

---





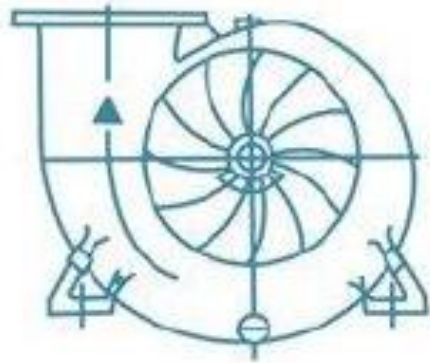
# ASSOCIATE GROUP COMPANIES – RP ALLOYS

---



---

# ASSOCIATE GROUP COMPANIES



**SINTECH**  
**P U M P S**



# ASSOCIATE GROUP COMPANIES – SINTECH PUMPS



SUPPLIER TO  
**650+**  
SUGAR FACTORIES  
WORLDWIDE

**UTTAM SUCROTECH**  
INTERNATIONAL

# ASSOCIATE GROUP COMPANIES – SINTECH PUMPS

---

## MANUFACTURING RANGE

- Centrifugal Pumps
- Vertical Mixed Flow / Axial Flow / Vertical Turbine Pumps
- Vertical Sump Pumps
- Non Clog Pumps with Dynamic Sealing Arrangement
- Single and Double Suction Horizontal Split Casing Pumps
- Multistage High Pressure Pumps
- Pumps for Falling Film Evaporator And Recirculation with Dynamic Sealing



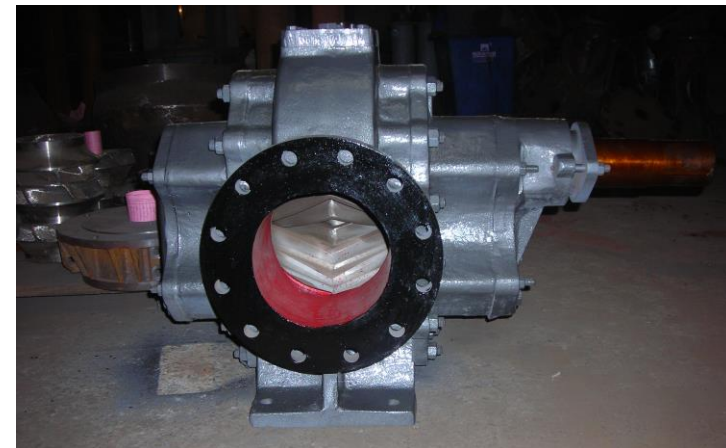


# ASSOCIATE GROUP COMPANIES – SINTECH PUMPS

---

## MANUFACTURING RANGE

- Specially designed Choke less Pumps for Sludge Removal
- Specially Designed Pumps for Abrasive Liquid Application.
- Specially Designed Pumps for Molasses
- Non Clog Pumps with Dynamic Sealing Arrangement
- Single and Double Suction Horizontal Split Casing Pumps
- Multistage High Pressure Pumps



# ASSOCIATE GROUP COMPANIES – SINTECH PUMPS

---





---

# GOING BEYOND PROFITS



## CORPORATE SOCIAL RESPONSIBILITY

# CORPORATE SOCIAL RESPONSIBILITY

---

## Uttam School for Girls





# CORPORATE SOCIAL RESPONSIBILITY

## Uttam School for Girls

Built on the motto:

***“Educate a girl and you educate her whole family”***

and a Vision of

Educating the girl-child not only with the grace & glory of womanhood, but also the temperament of a Global Citizen



**UTTAM SUCROTECH  
INTERNATIONAL**

# CORPORATE SOCIAL RESPONSIBILITY

---

## Uttam School for Girls



- Founded in 1994
- The **Number 1** Girls School in the entire Delhi NCR region
- A school spread over 5 acres with over 1300 students



# CORPORATE SOCIAL RESPONSIBILITY

## Uttam School for Girls

World class integrated learning infrastructure – *computer labs, library, swimming pool, gymnasium, music, yoga, dance, sports (tennis, billiards, golf, basketball, football)*



# CORPORATE SOCIAL RESPONSIBILITY

## Farmer's Training & Support

- UTTAM works with more than **110,000** outgrower farmers at our 4 Sugar Plants in India
- UTTAM supports farmers by:
  - Free Distribution of informational material in local languages
  - Supply of farming implements (*free of cost*)
  - Training on
    - *Modern agricultural practices*
    - *Adoption of high yield sugar varieties*





---

# THANK YOU FOR YOUR TIME AND ATTENTION

UTTAM SUCROTECH INTERNATIONAL PVT. LIMITED  
H 194, Sector 63, Noida – 201 301  
Uttar Pradesh, India

Phone: +91-120-4726400

Email: [info@usipl.com](mailto:info@usipl.com)

Website: [www.usipl.com](http://www.usipl.com)